

(19)



Europäisches Patentamt

European Patent Office

Office européen des brevets



(11)

EP 0 875 200 A1

(12)

EUROPEAN PATENT APPLICATION

(43) Date of publication:

04.11.1998 Bulletin 1998/45

(51) Int. Cl.⁶: **A61B 5/022**, A61B 5/0225,
A61B 5/0285

(21) Application number: **97107225.1**

(22) Date of filing: **30.04.1997**

(84) Designated Contracting States:
CH DE FR GB IT LI NL SE

(71) Applicant:

Nihon Kohden Corporation
Shinjuku-ku Tokyo (JP)

(72) Inventors:

- **Ono, Kohei**
Shinjuku-ku, Tokyo (JP)
- **Kasuya-Hiromitsu**
Shinjuku-ku, Tokyo (JP)
- **Sugo, Yoshihiro**
Shinjuku-ku, Tokyo (JP)

• **Sohma, Takeshi**

Shinjuku-ku, Tokyo (JP)

• **Chen, Wenxi**

Shinjuku-ku, Tokyo (JP)

• **Hosaka, Hidehiro**

Shinjuku-ku, Tokyo (JP)

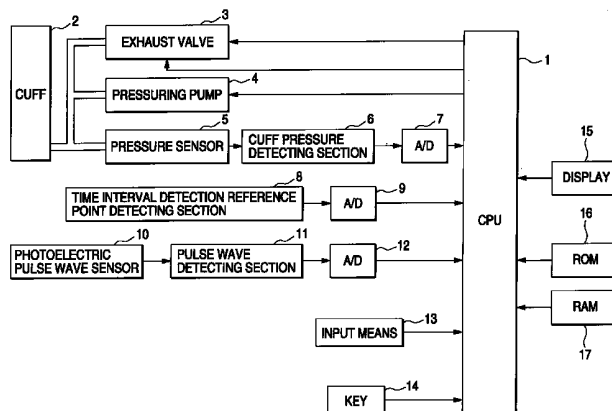
(74) Representative:

Grünecker, Kinkeldey,
Stockmair & Schwanhäusser
Anwaltssozietät
Maximilianstrasse 58
80538 München (DE)

(54) Blood pressure monitoring apparatus

(57) A blood pressure monitoring apparatus includes blood pressure measuring device for measuring blood pressure using a cuff (2), storage device for storing a pulse wave propagation time change threshold and a cardiovascular dynamic change threshold, both thresholds being inputted from an external device (13), time interval detection reference point detecting device (8) for detecting a time interval detection reference point on a pulse wave at an aorta of a body, pulse wave detecting device (11) for detecting a pulse wave at a peripheral blood vessel appearing with a time delay with respect to the pulse wave at the aorta, pulse wave propagation time counting device for counting a pulse wave propagation time based on detected outputs from the time interval detection reference point detecting device and the pulse wave detecting device, pulse wave propagation time change calculating device for calculating a pulse wave propagation time change from the two pulse wave propagation times counted by the pulse wave propagation time counting device, main judgement device for judging whether or not a condition of an object is changed on the basis of a result of the pulse wave propagation time change calculating device, and main control device for controlling the blood pressure measuring device and for measuring blood pressure of a subject using the cuff in accordance with a result of the judging device.

FIG. 1



EP 0 875 200 A1

DescriptionBACKGROUND OF THE INVENTION5 Field of the invention

The present invention relates to blood pressure monitoring apparatuses to be applied to such fields as requiring continuous blood pressure monitoring for subjects to be treated in operating rooms, intensive care units, a first-aid rooms, an extracorporeal dialysis rooms, and the like. More particularly, the present invention is directed to a blood pressure monitoring apparatus that monitors blood pressure by means of pulse wave propagation time.

Related art

Available as a blood pressure monitoring apparatus that monitors blood pressure by continuously measuring the blood pressure of a subject are a noninvasive blood pressure measurement type based on an oscillometric method by wrapping a cuff around the brachium of a subject and an invasive blood pressure measurement type that involves insertion of a needle into an artery of a subject. Further, blood pressure measurement based on pulse wave propagation velocity is also available as the noninvasive blood pressure measurement type.

By the way, conventional blood pressure monitoring apparatuses have addressed the following problems.

(1) In a blood pressure monitoring apparatus that measures blood pressure in a noninvasive manner using a cuff, the problem arises when blood pressure is measured periodically at a long time interval. That is, a sudden turn for the worse such as a shock in blood pressure has, in some cases, been missed when the blood pressure is measured at a time interval exceeding 5 minutes, for example. It may be noted that by shortening the measuring cycle to, e.g., 1 minute, the likelihood of missing sudden changes in blood pressure can be reduced. However, when the measuring cycle is shortened, the blood vessel of a body part around which the cuff is wrapped is burdened.

(2) Further, when blood pressure is measured periodically, the subject is burdened with the part of his or her body being pressured with the cuff more frequently than necessary.

(3) In a blood pressure monitoring apparatus of the invasive measurement type, the subject may, in some cases, be mentally burdened by stress, or be introduced the risk of infection, bleeding and the arterial occlusion. Further, such blood pressure monitoring apparatus entails more cumbersome operation than a blood pressure monitoring apparatus of the noninvasive blood pressure measurement type, which in turn burdens the medical staff as well.

(4) Blood pressure measurements based on pulse wave propagation velocity are not sufficiently accurate.

35 SUMMARY OF THE INVENTION

Therefore, the object of the present invention is to provide a blood pressure monitoring apparatus that can monitor blood pressure continuously, safely, and highly accurately without giving burdens to a subject.

According to an aspect of the present invention, there is provided a blood pressure monitoring apparatus that includes: blood pressure measuring means for measuring blood pressure using a cuff; blood pressure value storage means for storing a blood pressure value measured by the blood pressure measuring means; threshold storage means for storing a pulse wave propagation time change threshold and a blood pressure change threshold that are inputted from an external source; time interval detection reference point detecting means for detecting a time interval detection reference point on a pulse wave at an aorta of a body; pulse wave detecting means for detecting a pulse wave at a peripheral blood vessel appearing with a time delay with respect to the pulse wave at the aorta; pulse wave propagation time counting means for counting a pulse wave propagation time based on detected outputs from the time interval detection reference point detecting means and the pulse wave detecting means; pulse wave propagation time storage means for storing a pulse wave propagation time counted by the pulse wave propagation time counting means when the blood pressure has been measured by the blood pressure measuring means; first logic operation means for calculating a pulse wave propagation time change from two pulse wave propagation times counted by the pulse wave propagation time counting means; second logic operation means for calculating coefficients specific to a subject from at least two blood pressure values stored in the blood pressure value storage means and from the pulse wave propagation times stored in the pulse wave propagation time storage means corresponding to the each blood pressure values, the coefficients allowing equations expressing a relationship between blood pressure and pulse wave propagation time to be established; third logic operation means for updating a pulse wave propagation time change threshold stored in the threshold storage means by dividing a blood pressure change threshold read from the threshold storage means by a calculated coefficient specific to the subject; judgement means for judging whether or not the calculated pulse wave propagation time change exceeds the pulse wave propagation time change threshold read from the threshold storage

means; and control means for measuring blood pressure of the subject using the cuff by controlling the blood pressure measuring means and controlling the pulse wave propagation time change threshold updating operation when it is judged that the pulse wave propagation time change exceeds the pulse wave propagation time change threshold.

Further, according to another aspect of the present invention, the second logic operation means calculates the coefficients specific to the subject by a least-squares method using at least two blood pressure values stored in the blood pressure value storage means and the pulse wave propagation times stored in the pulse wave propagation time storage means corresponding to the each blood pressure values, the coefficients being equivalent to a single regression coefficient and a coefficient term when the relationship between blood pressure and pulse wave propagation time is expressed in the form of a single regression line.

According to another aspect of the present invention, there is provided a blood pressure monitoring apparatus including a blood pressure measuring means for measuring blood pressure using a cuff; a storage means for storing a pulse wave propagation time change threshold and a cardiovascular dynamic change threshold, both thresholds being inputted from an external means; a time interval detection reference point detecting means for detecting a time interval detection reference point on a pulse wave at an aorta of a body; a pulse wave detecting means for detecting a pulse wave at a peripheral blood vessel appearing with a time delay with respect to the pulse wave at the aorta; a pulse wave propagation time counting means for counting a pulse wave propagation time based on detected outputs from the time interval detection reference point detecting means and the pulse wave detecting means; a pulse wave propagation time change calculating means for calculating a pulse wave propagation time change from the two pulse wave propagation times counted by the pulse wave propagation time counting means; a cardiovascular dynamic change calculating means for calculating a cardiovascular dynamic change from the time interval detection reference point or the pulse wave at the peripheral blood pressure; a first judging means for judging whether or not the pulse wave propagation time change calculated by the pulse wave propagation time change calculating means exceeds the pulse wave propagation time change threshold stored in the storage means; a second judging means for judging whether or not the cardiovascular dynamic change calculated by the cardiovascular dynamic change calculating means exceeds the cardiovascular dynamic change threshold stored in the storage means; and a control means for controlling the blood pressure measuring means and for measuring blood pressure of a subject using the cuff if it is judged that the pulse wave propagation time change exceeds the pulse wave propagation time change threshold or if it is judged that the cardiovascular dynamic change exceeds the cardiovascular dynamic change threshold.

The present invention is provided as using a value equivalent to a heart rate change as a cardiovascular dynamic change threshold, causing the cardiovascular dynamic change calculating means to calculate a heart rate change based on the time interval detection reference point, and by causing the second judging means to judge whether or not the heart rate change exceeds the cardiovascular dynamic change threshold equivalent to the heart rate change.

The present invention is provided as using a value equivalent a rate of change of an amplitude of a pulse wave of a peripheral blood vessel as a cardiovascular dynamic change threshold, and causing the cardiovascular dynamic change calculating means to calculate the rate of change of the amplitude of the pulse wave of the peripheral blood vessel based on the pulse wave at the peripheral blood vessel, and causing the second judging means to judge whether or not the rate of change of the amplitude of the pulse wave exceeds the cardiovascular dynamic change threshold equivalent to the rate of change of the amplitude of the pulse wave of the peripheral blood vessel.

The present invention is provided as using a value equivalent to a rate of change of a dc component of a pulse wave of a peripheral blood vessel as a cardiovascular dynamic change threshold, causing the cardiovascular dynamic change calculating means to calculate the rate of change of the dc component of the pulse wave based on the pulse wave at the peripheral blood vessel, and causing the second judging means to judge whether or not the rate of change of the dc component of the pulse wave exceeds the cardiovascular dynamic change threshold equivalent to the rate of change of the dc component of the pulse wave of the peripheral blood vessel.

The present invention is provided as using a heart rate change, a rate of change of an amplitude of a pulse wave of a peripheral blood vessel, and a rate of change of a dc component of a pulse wave of a peripheral blood vessel as cardiovascular dynamic change thresholds; causing the cardiovascular dynamic change calculating means to calculate not only the heart rate change based on the time interval detection reference point, but also the rate of change of the amplitude of the pulse wave and the rate of change of the dc component of the pulse wave based on the pulse wave at the peripheral blood vessel; causing the second judging means to judge whether or not the heart rate change exceeds the cardiovascular dynamic change threshold equivalent to the heart rate change, whether or not the rate of change of the amplitude of the pulse wave exceeds the cardiovascular dynamic change threshold equivalent to the rate of change of the amplitude of the pulse wave of the peripheral blood vessel, and whether or not the rate of change of the dc component of the pulse wave exceeds the cardiovascular dynamic change threshold equivalent to the rate of change of the dc component of the peripheral blood vessel; and causing the control means to control the blood pressure measuring means and to measure blood pressure of a subject using the cuff if it is judged that the heart rate change exceeds the cardiovascular dynamic change threshold equivalent to the heart rate change, if it is judged that the rate of change of the amplitude of the pulse wave exceeds the cardiovascular dynamic change threshold equivalent to the rate of change

of the amplitude of the pulse wave of the peripheral blood vessel, or if it is judged that the rate of change of the dc component of the pulse wave exceeds the cardiovascular dynamic change threshold equivalent to the rate of change of the dc component of the pulse wave of the peripheral blood vessel.

As described in the foregoing, the blood pressure monitoring apparatuses of the present invention are provided as not only judging whether or not the pulse wave propagation time change exceeds the preset pulse wave propagation time change threshold, but also judging whether or not the cardiovascular dynamic change, i.e., the heart rate change, the rate of change of the amplitude of the pulse wave at the peripheral blood vessel, or the rate of change of the dc component of the pulse wave at the peripheral blood vessel, exceed the preset cardiovascular dynamic change thresholds thereof and starting a blood pressure measurement for the subject if any one of the changes is judged to exceed the threshold thereof. Therefore, the burden given to the subject in the past can be reduced. In addition, the blood pressure monitoring apparatuses of the present invention are also characterized as allowing a feeble blood pressure fluctuation that cannot be detected by the pulse wave propagation time change to be detected by the cardiovascular dynamic change. Therefore, a sudden turn for the worse in the blood pressure fluctuation of the subject can be monitored more reliably.

BRIEF DESCRIPTION OF THE DRAWINGS

Fig. 1 is a block diagram showing a configuration of a blood pressure monitoring apparatus, which is a first embodiment of the present invention.

Fig. 2 is a general flowchart showing an operation of the blood pressure monitoring apparatus shown in Fig. 1.

Fig. 3 is a flowchart showing an operation of the blood pressure monitoring apparatus shown in Fig. 1.

Fig. 4 is a waveform diagram illustrative of an operation of the blood pressure monitoring apparatus shown in Fig. 1.

Fig. 5 is a waveform diagram illustrative of a pulse wave propagation time.

Fig. 6 is a block diagram showing a configuration of a blood pressure monitoring apparatus, which is a second embodiment of the invention; and

Fig. 7 is a flowchart showing an operation of the blood pressure monitoring apparatus shown in Fig. 6.

DETAILED DESCRIPTION OF THE PREFERRED EMBODIMENTS

First embodiment

The first basic concept of the present invention will hereunder be described.

The principle of a blood pressure measuring method based on pulse wave propagation velocity is as follows.

As shown in Fig. 5, the specific point of a pulse wave on the side of a peripheral blood vessel such as a finger or a ear appears with a delay with respect to the specific point of an aortic pulse wave. This delay time is the pulse wave propagation time.

A pulse wave propagation velocity corresponding to a pulse wave propagation time at a predetermined distance appears as a function of the volume elasticity of a blood vessel. The volume elasticity of a blood vessel increases with increasing blood pressure, and the blood vessel wall becomes hard, which in turn increases propagation velocity. Therefore, a blood pressure change can be detected from the pulse wave propagation velocity.

A sphygmomanometer using this pulse wave propagation time must be calibrated by measuring blood pressure through other means, e.g., using a cuff, and referring to the measured results.

Such calibration requires measurements of both blood pressure values and pulse wave propagation times when a subject is, e.g., at rest and in exercise.

Here, assuming that the blood pressure value and the pulse wave propagation time at the time the subject is at rest are P_1 , T_1 and that those at the time the subject is in exercise are P_2 , T_2 , and further assuming that coefficients specific to the subject are α , β , then the blood pressure values P_1 , P_2 are given as follows.

$$P_1 = \alpha T_1 + \beta$$

$$P_2 = \alpha T_2 + \beta$$

Therefore, by measuring P_1 , T_1 , P_2 , T_2 , α , β can be calculated from the above two equations. Once α , β have been calculated, the blood pressure values of the subject can thereafter be measured only by measuring the pulse wave propagation time. It may be noted that in measuring two different blood pressure values, the measuring timings are not limited to such timings at which the subject is at rest and in exercise as long as measuring timings are such as to allow two different blood pressure values to be picked up when different blood pressures appear.

Blood pressure fluctuations of a subject can be monitored by consecutively measuring the pulse wave propagation

time. In this case, when the pulse wave propagation time change ΔT exceeds a preset pulse wave propagation time change threshold ΔT_s , it is judged that a sudden change has occurred in the blood pressure fluctuation of a subject, and a blood pressure measurement is made using the cuff at this moment. Further, in this case, noise may be picked up in the measured values that are to be used for calculating α , β or α , β may thereafter fluctuate. Therefore, α , β are calculated again when the pulse wave propagation time change ΔT exceeds the pulse wave propagation time change threshold ΔT_s . Further, the pulse wave propagation time change threshold ΔT_s is calculated based on the calculated value α to update the current pulse wave propagation time change threshold ΔT_s .

The above operation prevents the subject from being burdened as in the case where blood pressure measurements are continuously made using the cuff at a predetermined cycle, which in turn contributes to significantly reducing burdens given to the subject and allowing blood pressure fluctuations to be monitored with high accuracy.

A blood pressure monitoring apparatus, which is a first embodiment of the present invention will now be described with reference to the drawings.

A. Configuration of the blood pressure monitoring apparatus

Fig. 1 is a block diagram showing an exemplary configuration of the blood pressure monitoring apparatus, which is the embodiment of the present invention. In Fig. 1, a cuff 2 is designed to be attached to a brachium or finger of a subject, and the inside thereof is opened or closed with respect to the atmosphere by an exhaust valve 3. Air is supplied to the cuff 2 by a pressuring pump 4. A pressure sensor 5 is arranged in the detecting portion (not shown) of the blood pressure monitoring apparatus to which the static air pressure inside a cuff is transmitted through the tube, and the output of the sensor is detected by a cuff pressure detecting section 6. The output of the cuff pressure detecting section 6 is converted into a digital signal by an A/D converter 7 and is received by a CPU (central processing unit) 1.

A time interval detection reference point detecting section 8 is provided to detect a timing at which the aortic blood pressure reaches a bottom value thereof substantially simultaneously with generation of an ECG R wave. The output of this detecting section 8 is received by the CPU 1 while converted into a digital signal by an A/D converter 9. The time interval detection reference point detecting section 8 can be constructed of electrodes that are attached to the chest of a subject and an ECG R wave detecting section to which the electrodes are connected. It may be noted that the time interval detection reference point detecting section 8 can be constructed also of a photoelectric pulse wave sensor or pressure pulse wave sensor for detecting an aortic pulse wave, and a pulse wave detecting section to which such sensor is connected.

A photoelectric pulse wave sensor 10 is attached to, e.g., a finger of a subject to measure pulse waves at a peripheral blood vessel. When the output of the photoelectric pulse wave sensor 10 is sent to a pulse wave detecting section 11, the pulse wave at the part of the subject to which the sensor is attached can be detected. The output of the pulse wave detecting section 11 is received by the CPU 1 while converted into a digital signal by an A/D converter 12.

Input means 13 inputs an initial pulse wave propagation time change threshold ΔT_s , a blood pressure change threshold ΔBPs , a maximum calibration point count m , and the like. A key 14 is pressed when blood pressure measurement is to be made manually using the cuff 2 and when the pulse wave propagation time change threshold ΔT_s is to be updated.

The CPU 1 executes a processing program based on signals sent from the A/D converters 7, 9, 12 and the key 14, outputs necessary control signals to the exhaust valve 3, the pressuring pump 4, and the like, and supplies the processed results to a display 15. A ROM 16 that is connected to the CPU 1 has the processing program stored therein. Further, in a RAM 17 are not only data areas arranged for storing blood pressure measurement data but also a counter, a flag, buffers, and registers arranged. Here, the following counter, flag, buffers, and registers are provided.

- 45 R ΔT_s : Register for storing a pulse wave propagation time change threshold ΔT_s
- R ΔBPs : Register for storing a blood pressure change threshold ΔBPs
- R m : Register for storing a maximum calibration point count m
- R α : Register for storing α
- R β : Register for storing β
- 50 RT t : Register for storing a pulse wave propagation time T_t at the current measurement (actually measured value)
- RT t_1 : Register for storing a pulse wave propagation time T_{t_1} at the current calibration
- R ΔT : Register for storing a pulse wave propagation time change ΔT
- RT c : Register for storing a pulse wave propagation time at the last calibration (actually measured value)
- RB Pt : Register for storing an actually measured blood pressure value at the current calibration
- 55 i: Ring buffer address counter
- k: Flag indicating that the maximum calibration point count has been reached. The flag is set to "1" when the maximum calibration point count has been reached, and "0" in conditions other than this.
- BP(i): Ring buffer for storing a measured blood pressure value

T(i) Ring buffer for storing a counted pulse wave propagation time

The cuff 2, the exhaust valve 3, the pressuring pump 4, the pressure sensor 5, the cuff pressure detecting section 6, and the A/D converter 7 constitute the blood pressure measuring means. The RAM 16 corresponds to the blood pressure value storage means, the threshold storage means, and the pulse wave propagation time storage means. The time interval detection reference point detecting section 8 and the A/D converter 9 constitute the time interval detection reference point detecting means. The photoelectric pulse wave sensor 10, the pulse wave detecting section 11, and the A/D converter 12 constitute the pulse wave detecting means. The CPU 1 corresponds to the pulse wave propagation time counting means, the first logic operation means, the second logic operation means, the third logic operation means, the control means, and the judging means.

B. Operation of the blood pressure monitoring apparatus

(a) General flowchart

An operation of the thus constructed blood pressure monitoring apparatus will be described next.

Fig. 2 is a general flowchart showing an operation of the blood pressure monitoring apparatus.

Upon feeding power to the apparatus, an initial pulse wave propagation time change threshold ΔT_s , a blood pressure change threshold ΔBPs , and a maximum calibration point count m are inputted from the input means 13, and these inputted values are stored in the registers $R\Delta T_s$, $R\Delta BPs$, Rm in Step S1. Then, in Step S2, the ring buffer address counter i is set to "1", and the maximum calibration point count flag k is reset to "0". Then, in Step S3, it is judged whether or not there is an input through the key 14. If it is judged negatively, then it is judged whether or not the values α , β are present in Step S4. Since the values α , β are not present at this point of time, Step S3 will be executed again. If there is no input through the key for an initial blood pressure measurement, Steps S3 and S4 will be executed repetitively.

Under this condition, if the key has been pressed for an initial blood pressure measurement, a blood pressure measurement is made using the cuff 2 in Step S5, and the measured value BPt is written to the ring buffer $BP(i)$ that is specified by the ring buffer address counter i being equal to "1". Then, in Step S6, the pulse wave propagation time Tt_1 is counted based on the data from the A/D converters 9, 12, and the measured value is written to the ring buffer $T(i)$ that is specified by the ring buffer address counter i being equal to "1". Then, in Step S7, the blood pressure value BPt already measured and written to the ring buffer $BP(1)$ is displayed on the display 15.

In Step S8, it is judged whether or not the ring buffer address counter i has reached the maximum calibration point count m . If it is judged affirmatively, it means that the ring buffers $BP(i)$ and $T(i)$ are full; i.e., data have been written to all the ring buffers $BP(1)$ to $BP(m)$. Therefore, the maximum calibration point count flag k is set to "1" in Step S9. Since $i = 1$ at this point of time, the processing in Step S9 is not executed, but Step S10 will be executed. In Step S10, it is judged whether or not the maximum calibration point count flag k is set to "0" and the ring buffer address counter i has a count of "2" or more. In this case, since these conditions are not satisfied at this point of time, the pulse wave propagation time Tt_1 is written to the register RTc in Step S12. After this processing in Step S11. Then in step 12, the ring buffer address counter i is incremented by "1" after this processing in step 12 has been executed, Step S3 will be executed again to judge whether or not there is an input through the key.

On the other hand, if it is judged in Step S8 that the ring buffer address counter i has reached the maximum calibration point count m , the maximum calibration point count flag k is set to "1" in Step S9, and the processing for calculating the values α , β is executed in Step S13. This processing is executed based on the blood pressure values and pulse wave propagation times corresponding to the maximum calibration point count. As described above, the values α , β are the coefficients specific to an individual subject.

Also, when the maximum calibration point count flag k is set to "0" and the ring buffer address counter i has a count of 2 or more in Step S10, the processing for calculating α , β is executed based on at least two blood pressure values BPt and pulse wave propagation times Tt_1 in Step S13.

After the processing for calculating α , β has been executed, the processing for calculating the pulse wave propagation time change threshold ΔT_s is executed in Step S14. In this processing, the pulse wave propagation time change threshold ΔT_s can be obtained by dividing the blood pressure change threshold ΔBPs by the calculated value α . After the pulse wave propagation time change threshold ΔT_s has been calculated, the pulse wave propagation time change threshold ΔT_s is written to the register $R\Delta T_s$ in Step S15. That is, the pulse wave propagation time change threshold ΔT_s is updated. After this processing, the pulse wave propagation time Tt_1 is written to the register RTc in Step S11, and in step 12, the ring buffer address counter i is incremented by "1", then Step S3 will thereafter be executed to judge whether or not there is an input through the key.

As described above, if there is an input through the key for an initial blood pressure measurement, the blood pressure value BPt is measured, and the pulse wave propagation time Tt_1 is also counted. As a result, the counted pulse wave propagation time Tt_1 is written to the register RTc , and the ring buffer address counter i has a count of "2".

When the initial blood pressure measurement has been made and the values α , β have therefore been calculated, the pulse wave propagation time T_t is counted based on the data from the A/D converters 9, 12 in Step S16. Then, in Step S17, the processing for calculating the blood pressure value BP from the pulse wave propagation time T_t and the values α , β is executed. That is, the blood pressure value BP is calculated from $P = \alpha T_t + \beta$. Then, the calculated blood pressure value BP is displayed on the display 15 in Step S18. After the processing for displaying the blood pressure value BP has been executed, the processing for calculating the pulse wave propagation time change ΔT is executed in Step S19. The pulse wave propagation time change ΔT is calculated from $|T_t - T_c|$. Then, in Step S20, it is judged whether or not the pulse wave propagation time change ΔT calculated in Step S19 exceeds the pulse wave propagation time change threshold ΔT_s , i.e., whether or not an inequality $\Delta T > \Delta T_s$ is satisfied. If the inequality $\Delta T > \Delta T_s$ is not satisfied, Step S3 will be executed to repeat a series of processing again. That is, if the pulse wave propagation time change ΔT does not exceed the pulse wave propagation time change threshold ΔT_s , the processing for counting the pulse wave propagation time T_t is executed consecutively.

In contrast thereto, if it is judged that the inequality $\Delta T > \Delta T_s$ is satisfied in Step S20, it is deemed that there is a sudden change such as a shock in the blood pressure fluctuation of the subject. Therefore, Step S5 will be executed to take care of such a sudden change in the blood pressure fluctuation of the subject; i.e., a blood pressure measurement is made using the cuff 2, and the measured blood pressure value BPt is written to the register RBPt. Further, the pulse wave propagation time T_{t1} is counted in Step S6, and the counted value is written to the register RTt₁. The measured blood pressure value BPt is displayed on the display 15 in Step S7.

Successively, in Step S8, it is judged whether or not the ring buffer address counter i has reached the maximum calibration point count m . In this case, since the ring buffer address counter i indicates "2", it is judged in Step S10 that the maximum calibration point count flag k is set to "0" and that the ring buffer address counter i has a count of "2" or more. Therefore, the processing for calculating α , β is executed in Step S13.

After the processing for calculating α , β has been executed, the processing for calculating the pulse wave propagation time change threshold ΔT_s is executed in Step S14. Then, in Step S15, the processing for updating the pulse wave propagation time change threshold ΔT_s is executed. Then, the pulse wave propagation time T_{t1} that has been written in the register RTt₁ is written to the register RTc. Then in step 12, the ring buffer address counter i is incremented by "1".

As described above, not only the pulse wave propagation time T_t is counted, but also the blood pressure value is calculated from the measured pulse wave propagation time T_t and the values α , β in the processing from Steps S16 to S19. Such processing from Steps S16 to S19 is executed based on the same α , β unless the pulse wave propagation time change ΔT exceeds the pulse wave propagation time change threshold ΔT_s . If the pulse wave propagation time change ΔT exceeds the pulse wave propagation time change threshold ΔT_s , a blood pressure measurement is made using the cuff 2, so that new α , β are calculated, and the pulse wave propagation time change threshold ΔT_s is updated. In this case, if the ring buffer address counter i has not reached the maximum calibration point count m , the values α , β are calculated based on the blood pressure values and pulse wave propagation times accumulated in the ring buffers up to that point of time. On the other hand, if the ring buffer address counter i has reached the maximum calibration point count m , the values α , β are calculated based on the blood pressure value and pulse wave propagation time corresponding to such maximum calibration point count.

Here, Fig. 4 is a trend graph showing the measured blood pressure values BPt in function of time and the counted pulse wave propagation times T_t in function of time. As shown in Fig. 4, unless the pulse wave propagation time change ΔT exceeds the pulse wave propagation time change threshold ΔT_s after an initial blood pressure measurement has been made using the cuff 2, the pulse wave propagation time T_t is continuously counted. If $\Delta T > \Delta T_s$ at some point of time, then a blood pressure measurement is made using the cuff 2. When the blood pressure measurement has been made using the cuff 2, the ring buffer address counter i has a count of "2", and α , β are calculated at this point of time. Further, the pulse wave propagation time change threshold ΔT_s is calculated from the calculated value α and updated. After the updating operation has been performed, the pulse wave propagation time T_t is consecutively counted. The pulse wave propagation time change threshold ΔT_s is thereafter updated every time $\Delta T > \Delta T_s$.

(b) The processing for calculating α , β

Fig. 3 is a flowchart showing the processing for calculating α , β in the blood pressure monitoring apparatus according to this embodiment.

It is judged in Step S31 whether or not the maximum calibration point count flag k is set to "1". If it is judged negatively, i.e., if the number of data pieces of the blood pressure values BPt and pulse wave propagation times T_{t1} written to the ring buffers BP(i) and T(i) has not reached the maximum calibration point count m , then α , β are calculated based on the currently available number of data pieces in Step S32. In this case, α , β are calculated by the least-squares method. That is, α is obtained by dividing the sum of products of deviatoric of the blood pressure value BPt and deviatoric of the pulse wave propagation time T_{t1} by the sum of deviatoric squares of the pulse wave propagation time T_{t1} ,

and β is obtained by subtracting the product of the average of the pulse wave propagation times T_{t1} and α from the average of the blood pressure values BPt.

In Step S32, α , β are calculated from the blood pressure values BPt and pulse wave propagation times T_{t1} corresponding to a value smaller than the maximum calibration point count m , i.e., a count specified by the ring buffer address counter. The value α to be calculated is given as indicated in Eq. 1.

$$\alpha = \frac{\sum_{j=1}^i (BP(j) - BP_{av}) (T(j) - T_{av})}{\sum_{j=1}^i (T(j) - T_{av})^2} \quad (Eq1)$$

In this case, the BPav is an average of the values in the ring buffers BP(1) to BP(i), and the Tav is an average of the values in the ring buffers T(1) to T(i).

On the other hand, β is calculated from the following equation.

$$\beta = BP(i) - \alpha \cdot T(i)$$

On the other hand, if it is judged in Step S31 that the maximum calibration point count flag k is set to "1", i.e., the number of data pieces of the blood pressure values BPt and pulse wave propagation times T_{t1} written in the ring buffers BP(i) and T(i) has reached the maximum calibration point count m , α , β are calculated based on the data corresponding to the maximum calibration point count m in Step S33. In this case also, α , β are calculated by the least-squares method.

In Step S33, α , β are calculated from the blood pressure values BPt and pulse wave propagation times T_{t1} corresponding to the maximum calibration point count m that is a count specified by the ring buffer address counter i . The value α is calculated by an equation indicated in Eq. 2.

$$\alpha = \frac{\sum_{j=1}^m (BP(j) - BP_{av}) (T(j) - T_{av})}{\sum_{j=1}^m (T(j) - T_{av})^2} \quad (Eq2)$$

In this case, the BPav is an average of the values in the ring buffers BP(1) to BP(m), and the Tav is an average of the values in the ring buffers T(1) to T(m).

On the other hand, β is calculated from the following equation.

$$\beta = BP(m) - \alpha \cdot T(m)$$

As described above, if there are two or more sets of data, each set of data consisting of a blood pressure value BPt and a pulse wave propagation time T_{t1} , temporarily stored in the ring buffer BP(i), α , β are calculated by the least-squares method based on such two sets of data.

After the processing in Step S32 or 33 has been completed, it is judged in Step S34 whether or not the ring buffer address counter i indicates a count that is equal to the maximum calibration point count m or more. If it is judged affirmatively, the ring buffer address counter i is set to "1", and the α , β calculating subroutine is terminated. From then on, the values α , β are calculated by the least-squares method for all the data stored in the ring buffers (for m pieces of data). If, on the other hand, the ring buffer address counter i has a count smaller than the maximum calibration point count m , the subroutine is terminated directly.

As described above, in this embodiment, when a command for making an initial blood pressure measurement has been inputted through the key, the blood pressure value BPt is measured with the cuff 2, and the measured blood pres-

sure value BPt is displayed. At the same time, the pulse wave propagation time Tt_1 is counted. Immediately thereafter, a measurement of the pulse wave propagation time Tt is started. The pulse wave propagation time Tt is consecutively counted, and the pulse wave propagation time change ΔT is calculated every time the pulse wave propagation time Tt is counted, and the calculated pulse wave propagation time change ΔT is compared with the pulse wave propagation time change threshold ΔTs . When the pulse wave propagation time change ΔT exceeds the pulse wave propagation time change threshold ΔTs , not only the blood pressure value BPt is measured again with the cuff 2, but also the pulse wave propagation time Tt_1 is counted again. Further, the values α , β specific to a subject are calculated. Then, the pulse wave propagation time change threshold ΔTs is calculated from the calculated coefficient α , and the current pulse wave propagation time change threshold ΔTs is updated. In this case, the coefficients α , β are calculated based on the least-squares method from at least two sets of data, each set of data consisting of a blood pressure value BPt and a pulse wave propagation time Tt_1 , which are stored in the past including the blood pressure value BPt and pulse wave propagation time Tt_1 currently obtained.

Therefore, by judging whether or not the pulse wave propagation time change ΔT exceeds the pulse wave propagation time change threshold ΔTs while consecutively counting the pulse wave propagation time Tt , not only sudden changes in the blood pressure fluctuation of a subject are monitored, but also a blood pressure measurement is made using the cuff 2 correctly at the time of a sudden change in blood pressure fluctuation, and the pulse wave propagation time change threshold ΔTs is updated. Therefore, not only burdens given to the subject in the conventional example can be reduced significantly, but also blood pressure fluctuations can be monitored with high accuracy.

It may be noted that pulse wave propagation time counting processing may be made every heart beat or may be made in such a manner that the counting processing is executed at a predetermined time interval or for predetermined heart rates and an average of the counts is then calculated. By calculating the average, accurate pulse wave propagation time counting free from irregularly occurring noise can be implemented.

Second embodiment

The second basic concept of the invention will hereunder be described.

In a blood pressure monitoring apparatus of the noninvasive measurement type utilizes pulse wave propagation velocity (pulse wave propagation time at a predetermined distance).

The principle of a blood pressure measuring method based on pulse wave propagation velocity is as follows.

As shown in Fig. 5, the specific point of a pulse wave on the peripheral blood vessel side appears with a delay with respect to the specific point of an aortic pulse wave. This delay time is the pulse wave propagation time.

A pulse wave propagation velocity corresponding to a pulse wave propagation time at a predetermined distance appears as a function of the volume elasticity of a blood vessel. The volume elasticity of a blood vessel increases with increasing blood pressure, and the blood vessel wall becomes hard, which in turn increases propagation velocity.

Therefore, blood pressure fluctuations can be calculated from pulse wave propagation velocity. By consecutively measuring the pulse wave propagation time, the blood pressure fluctuations of a subject can be monitored. In this case, when a pulse wave propagation time change ΔT exceeds a preset pulse wave propagation time change threshold ΔTs , or when a heart rate change ΔHR exceeds a cardiovascular dynamic change threshold ΔHRs equivalent to a preset heart rate change, or when a rate of change of the amplitude of a pulse wave of a peripheral blood vessel r_1 exceeds a cardiovascular dynamic change threshold r_1s equivalent to a preset rate of change of the amplitude of a pulse wave of a peripheral blood vessel, or when a rate of change of the dc component of a pulse wave of a peripheral blood vessel r_2 exceeds a cardiovascular dynamic change threshold r_2s equivalent to a preset rate of change of the dc component of a pulse wave of a peripheral blood vessel, then it is judged that a sudden turn for the worse in the blood pressure fluctuation has occurred on a subject, and a noninvasive blood pressure measurement using the cuff is made at such timing.

In this case, the heart rate change ΔHR , the rate of change of the amplitude of the pulse wave of the peripheral blood vessel r_1 , and the rate of change of the dc component of the pulse wave of the peripheral blood vessel r_2 are cardiovascular dynamic changes, and these changes are more critical than the pulse wave propagation time change ΔT . Therefore, these changes can detect even a feeble change in blood pressure which cannot be detected by the pulse wave propagation time. As a result, a sudden turn for the worse in blood pressure fluctuation can be monitored with extremely high accuracy.

A blood pressure monitoring apparatus, which is an embodiment of the invention, will now be described with reference to the drawings.

A Configuration of the blood pressure monitoring apparatus

Fig. 6 is a block diagram showing an exemplary configuration of the blood pressure monitoring apparatus of the invention. In Fig. 6, a cuff 102 is designed to be attached to a brachium or finger of a subject and the inside thereof is

opened or closed with respect to the atmosphere by an exhaust valve 103. Air is supplied to the cuff 102 by a pressuring pump 104. A pressure sensor 105 is arranged on the cuff main body, and the output of the sensor is detected by a cuff pressure detecting section 106. The output of the cuff pressure detecting section 106 is converted into a digital signal by an A/D converter 107 and is received by a CPU (central processing unit) 101.

A time interval detection reference point detecting section 108 is provided to detect a timing at which the aortic blood pressure reaches a bottom value thereof substantially simultaneously with generation of an ECG R wave. The output of this detecting section 8 is received by the CPU 101 while converted into a digital signal by an A/D converter 109. The time interval detection reference point detecting section 108 can be constructed of electrodes that are attached to the chest of a subject and an ECG R wave detecting section to which the electrodes are connected. It may be noted that the time interval detection reference point detecting section 108 can be constructed also of a photoelectric pulse wave sensor or pressure pulse wave sensor for detecting an aortic pulse wave, and a pulse wave detecting section to which such sensor is connected.

A photoelectric pulse wave sensor 110 is attached to, e.g., a finger of a subject to measure pulse waves at peripheral blood vessels. When the output of the photoelectric pulse wave sensor 110 is sent to a pulse wave detecting section 111, the pulse wave at a position of the subject to which the sensor is attached can be detected. The pulse wave detecting section 111 outputs signals by separating the pulse wave into an ac component and a dc component. The ac component of the pulse wave is received by the CPU 101 while converted into a digital signal by an A/D converter 112. Further, the dc component of the pulse wave is received by the CPU 101 while converted into a digital signal by an A/D converter 113.

An input means 114 inputs an initial pulse wave propagation time change threshold ΔT_s , and initial cardiovascular dynamic change thresholds $\Delta H R_s$, $r_1 s$, and $r_2 s$. In this case, $\Delta H R_s$ is a value equivalent to a change in heart rate; $r_1 s$ is a value equivalent to the rate of change in the amplitude of a pulse wave of a peripheral blood vessel; $r_2 s$ is a value equivalent to the rate of change in the dc component of a pulse wave of a peripheral blood vessel. A key 115 is pressed when blood pressure is measured manually using the cuff 102.

The CPU 101 executes a processing program based on signals given from the A/D converters 107, 109, 112, 113 and the key 115, outputs necessary control signals to the discharge valve 103, the pressure pump 104, and the like, and supplies the processing result to a display 116. A ROM 117 that is connected to the CPU 101 has the processing program stored therein. Further, in a RAM 118 are various registers and data areas arranged for storing blood pressure measurement data.

The following registers are arranged.

RT₁: Register for storing a pulse wave propagation time T₁
 RT₂: Register for storing a pulse wave propagation time T₂
 RHR₁: Register for storing a heart rate HR₁
 RHR₂: Register for storing a heart rate HR₂
 RAC₁: Register for storing an amplitude AC₁ of a pulse wave of a peripheral blood vessel
 RAC₂: Register for storing an amplitude AC₂ of a pulse wave of a peripheral blood vessel
 RDC₁: Register for storing a dc component DC₁ of a pulse wave of a peripheral blood vessel
 RDC₂: Register for storing a dc component DC₂ of a pulse wave of a peripheral blood vessel

The cuff 102, the exhaust valve 103, the pressuring pump 104, the pressure sensor 105, the cuff pressure detecting section 106, and the A/D converter 107 constitute a blood pressure measuring means. The RAM 118 corresponds to a storage means. The time interval detection reference point detecting section 108 and the A/D converter 109 constitute a time interval detection reference point detecting means. The photoelectric pulse wave sensor 110, the pulse wave detecting section 111, and the A/D converters 112, 113 constitute a pulse wave detecting means. The CPU 101 corresponds to a pulse wave propagation time counting means, a pulse wave propagation time change calculating means, a cardiovascular dynamic change calculating means, a first judging means, a second judging means, and a control means.

B. Operation of the blood pressure monitoring apparatus

Then, an operation of the thus constructed blood pressure monitoring apparatus will be described.

Fig. 7 is a flowchart showing an operation of the blood pressure monitoring apparatus.

First, in Step S1, the pulse wave propagation time change threshold ΔT_s , the cardiovascular dynamic change thresholds $\Delta H R_s$, $r_1 s$, and $r_2 s$ are inputted from the input means 114 and written to the RAM 118. It may be noted that these thresholds ΔT_s , $\Delta H R_s$, $r_1 s$, and $r_2 s$ are preset by considering the weight, height, etc. of a subject.

After the respective thresholds have been written to the RAM 118, it is judged in Step S2 whether or not an input is given through the key 115. If it is judged affirmatively, the exhaust valve 103 and the pressuring pump 104 are con-

trolled by the CPU 1 in Step S3, and a blood pressure measurement is made on a subject using the cuff 102. Data received from the A/D converter 107 is processed internally by the CPU 101, and a blood pressure value BP measured by an oscillometric method is written to the RAM 118.

After the blood pressure value BP has been written, Step S4 is executed. That is, in Step S4, the pulse wave propagation time T_2 stored in the register RT_2 is moved to the register RT_1 ; the heart rate HR_2 stored in the register RHR_2 is moved to the register RHR_1 ; the amplitude AC_2 of the pulse wave stored in the register RAC_2 is moved to the register RAC_1 ; and the dc component DC_2 of the pulse wave stored in the register RDC_2 is moved to the register RDC_1 . In this case, if the pulse wave propagation time T_2 is not counted, the operation of moving the data to the registers RT_1 , RHR_1 , RAC_1 , and RDC_1 is not actually performed. After the data have been moved from one register to another, the previously measured blood pressure value BP is displayed on the display 16 in Step S5. Then, Step S2 will be executed.

In Step S2, whether or not an input has been made through the key is judged again. If it is judged negatively, the pulse wave propagation time T_2 equivalent to a time interval from a timing at which an aortic pulse wave reaches the bottom value thereof substantially simultaneously with generation of an ECG R wave to a timing at which the pulse wave at a peripheral blood vessel reaches the bottom value thereof based on data from the A/D converters 109, 112, and the measured value is stored in the register RT_2 of the RAM 118 in Step S6. Further, the heart rate and the amplitude and dc component of the pulse wave at the peripheral blood vessel are measured, and the measured values are stored in the registers RHR_2 , RAC_2 , and RDC_2 of the RAM 118.

Then, in Step S7, it is judged whether or not the data of the pulse wave propagation time T_1 is present. If the data is present, the pulse wave propagation time change ΔT , the heart rate change ΔHR , the pulse wave amplitude change rate r_1 , and the pulse wave dc component change rate r_2 are calculated in Step S8. That is, the pulse wave propagation time change ΔT is calculated by the following equation.

$$\Delta T = |T_2 - T_1|$$

Further, the heart rate change ΔHR , the pulse wave amplitude change rate r_1 , and the pulse wave dc component change rate r_2 are calculated by the following equations.

$$\Delta HR = |HR_2 - HR_1|$$

$$r_1 = |(AC_2 - AC_1) / AC_1|$$

$$r_2 = |(DC_2 - DC_1) / DC_1|$$

After the pulse wave propagation time change ΔT , the heart rate change ΔHR , the pulse wave amplitude change rate r_1 , and the pulse wave dc component change rate r_2 have been calculated, Step S9 will be executed. That is, in Step S9, it is judged whether or not the pulse wave propagation time change ΔT calculated in Step S8 exceeds the preset pulse wave propagation time change threshold ΔTs ; it is judged whether or not the heart rate change ΔHR calculated in Step S8 exceeds the value ΔHRS equivalent to the preset heart rate change; it is judged whether or not the pulse wave amplitude change rate r_1 calculated in Step S8 exceeds the value r_1s equivalent to the preset rate of change of the amplitude of the pulse wave at the peripheral blood vessel; and it is judged whether or not the pulse wave dc component change rate r_2 calculated in Step S8 exceeds the value r_2s equivalent to the preset rate of change of the dc component of the pulse wave at the peripheral blood vessel. That is, it is judged whether or not $\Delta T > \Delta Ts$, $\Delta HR > \Delta HRS$, $r_1 > r_1s$, and $r_2 > r_2s$ are satisfied. If none of the above inequalities is satisfied, then, a series of operation is repeated starting at Step S2.

On the other hand, if any one of the inequalities $\Delta T > \Delta Ts$, $\Delta HR > \Delta HRS$, $r_1 > r_1s$, and $r_2 > r_2s$ is satisfied, it is assumed that a sudden turn for the worse such as a shock has occurred in the blood pressure fluctuation of the subject, Step S3 will be executed. In Step S3, in order to take care of the sudden turn for the worse in the blood pressure fluctuation of the subject, a blood pressure measurement is made using the cuff 102, and the measured value BP is written to a data area in the RAM 118. Then, in Step S4, the pulse wave propagation time T_2 stored in the register RT_2 is moved to the register RT_1 ; the heart rate HR_2 stored in the register RHR_2 is moved to the register RHR_1 ; the amplitude AC_2 of the pulse wave stored in the register RAC_2 is moved to the register RAC_1 ; and the dc component DC_2 of the pulse wave stored in the register RDC_2 is moved to the register RDC_1 . Then, in Step S5, the blood pressure value BP measured in Step S3 is displayed on the display 116. Step S2 will thereafter be executed.

As described in the foregoing, this embodiment is characterized as constantly measuring the pulse wave propagation time and not only judging whether or not the pulse wave propagation time change ΔT exceeds the pulse wave propagation time change threshold ΔTs but also judging whether or not the cardiovascular dynamic changes ΔHR , r_1 , r_2 exceed the thresholds thereof ΔHRS , r_1s , r_2s , so that a sudden turn for the worse in the blood pressure fluctuation of a subject can be monitored and a blood pressure measurement using the cuff 2 is made reliably if any one of the values

exceeds the threshold thereof. Therefore, the burden given to the subject in the past can be reduced. In addition, this embodiment is also characterized as allowing a feeble blood pressure fluctuation that cannot be detected by the pulse wave propagation time change to be detected by the cardiovascular dynamic change. Therefore, a sudden turn for the worse in the blood pressure fluctuation of the subject can be monitored more reliably.

It should be noted that pulse wave propagation time counting processing may be made every heart beat or may be made in such a manner that the processing is executed at a predetermined time interval or for predetermined heart rates and an average of the counts can then be calculated. This technique of calculating the average allows accurate pulse wave propagation time counting free from irregularly occurring noise to be made.

According to the blood pressure monitoring apparatus of the present invention, a pulse wave propagation time change is calculated every time a pulse wave propagation time is counted consecutively, and the calculated pulse wave propagation time change is compared with a pulse wave propagation time change threshold; if the pulse wave propagation time change exceeds the pulse wave propagation time change threshold, a blood pressure measurement is made using a cuff and a pulse wave propagation time is counted; in this case, if there are at least two sets of data, each set of data consisting of a blood pressure value and a pulse wave propagation time obtained in a blood pressure measurement, including those data stored in the past, coefficients specific to a subject are calculated based on the least-squares method from the respective two sets of data; further, the pulse wave propagation time change threshold is calculated from a calculated coefficient specific to the subject; and the current pulse wave propagation time change threshold is updated. Therefore, it is no longer necessary to measure blood pressure using a cuff at a short cycle as in the conventional example, nor is it necessary to make invasive blood pressure measurements. As a result, burdens given to a subject can be reduced to a significant degree, which in turn allows blood pressure fluctuations to be monitored with high accuracy.

As described in the foregoing, the blood pressure monitoring apparatuses of the present invention are not only judging whether or not the pulse wave propagation time change exceeds the preset pulse wave propagation time change threshold, but also judging whether or not the cardiovascular dynamic change, i.e., the heart rate change, the rate of change of the amplitude of the pulse wave at the peripheral blood vessel, or the rate of change of the dc component of the pulse wave at the peripheral blood vessel, exceed the preset cardiovascular dynamic change thresholds thereof and starting a blood pressure measurement for the subject if any one of the changes is judged to exceed the threshold thereof. Therefore, the burden given to the subject in the past can be reduced. In addition, the blood pressure monitoring apparatuses of the present invention are also characterized as allowing a feeble blood pressure fluctuation that cannot be detected by the pulse wave propagation time change to be detected by the cardiovascular dynamic change. Therefore, a sudden turn for the worse in the blood pressure fluctuation of the subject can be monitored more reliably.

Claims

1. A blood pressure monitoring apparatus comprising:

blood pressure measuring means for measuring blood pressure using a cuff;
 storage means for storing a pulse wave propagation time change threshold and a cardiovascular dynamic change threshold, both thresholds being inputted from an external means;
 time interval detection reference point detecting means for detecting a time interval detection reference point on a pulse wave at an aorta of a body;
 pulse wave detecting means for detecting a pulse wave at a peripheral blood vessel appearing with a time delay with respect to said pulse wave at said aorta;
 pulse wave propagation time counting means for counting a pulse wave propagation time based on detected outputs from said time interval detection reference point detecting means and said pulse wave detecting means;
 pulse wave propagation time change calculating means for calculating a pulse wave propagation time change from said two pulse wave propagation times counted by said pulse wave propagation time counting means;
 main judgement means for judging whether or not a condition of an subject is changed on the basis of a result of said pulse wave propagation time change calculating means; and
 main control means for controlling said blood pressure measuring means and for measuring blood pressure of a subject using said cuff in accordance with a result of said judging means.

2. A blood pressure monitoring apparatus as claimed in claim 1, further comprising:

first logic operation means for calculating coefficients specific to a subject from at least two blood pressure values stored in the blood pressure value storage means and from the pulse wave propagation times stored in the

pulse wave propagation time storage means corresponding to the each blood pressure values, the coefficients allowing equations expressing a relationship between blood pressure and pulse wave propagation time to be established; and

second logic operation means for updating a pulse wave propagation time change threshold stored in the threshold storage means by dividing a blood pressure change threshold read from the threshold storage means by a calculated coefficient specific to the subject,

wherein said judgement means judges whether or not the calculated pulse wave propagation time change exceeds the pulse wave propagation time change threshold read from the threshold storage means, and said control means measures blood pressure of the subject using the cuff by controlling the blood pressure measuring means and controlling the pulse wave propagation time change threshold updating operation when it is judged that the pulse wave propagation time change exceeds the pulse wave propagation time change threshold.

3. A blood pressure monitoring apparatus according to claim 2, wherein the first logic operation means calculates the coefficients specific to the subject by a least-squares method using at least two blood pressure values stored in the blood pressure value storage means and the pulse wave propagation times stored in the pulse wave propagation time storage means corresponding to the each blood pressure values, the coefficients being equivalent to a single regression coefficient and a coefficient term when the relationship between blood pressure and pulse wave propagation time is expressed in the form of a single regression line.

4. A blood pressure monitoring apparatus according to claim 1, further comprising:

cardiovascular dynamic change calculating means for calculating a cardiovascular dynamic change from said time interval detection reference point or said pulse wave at said peripheral blood pressure; and auxiliary judging means for judging whether or not said cardiovascular dynamic change calculated by said cardiovascular dynamic change calculating means exceeds said cardiovascular dynamic change threshold stored in said storage means,

wherein said main judging means for judging whether or not said pulse wave propagation time change calculated by said pulse wave propagation time change calculating means exceeds said pulse wave propagation time change threshold stored in said storage means, and said main control means for controlling said blood pressure measuring means and for measuring blood pressure of a subject using said cuff if it is judged that said pulse wave propagation time change exceeds said pulse wave propagation time change threshold or if it is judged that said cardiovascular dynamic change exceeds said cardiovascular dynamic change threshold.

5. A blood pressure monitoring apparatus according to claim 4, wherein said storage means stores a cardiovascular dynamic change threshold equivalent to a heart rate change, said cardiovascular dynamic change calculating means calculates a heart rate change based on said time interval detection reference point detected by said time interval detection reference point detecting means, and said second judging means judges whether or not said heart rate change calculated by said cardiovascular dynamic change calculating means exceeds said cardiovascular dynamic change threshold equivalent to said heart rate change stored in said storage means.

6. A blood pressure monitoring apparatus according to claim 4, wherein said storage means stores a cardiovascular dynamic change threshold equivalent to a rate of change of an amplitude of a pulse wave at a peripheral blood vessel; said cardiovascular dynamic change calculating means calculates said rate of change of said amplitude of said pulse wave, which is a chronological rate of change of said amplitude of said pulse wave based on said pulse wave at said peripheral blood vessel detected by said pulse wave detecting means; and said second judging means judges whether or not said rate of change of said amplitude of said pulse wave calculated by said cardiovascular dynamic change calculating means exceeds said cardiovascular dynamic change threshold equivalent to said rate of change of said amplitude of said pulse wave of said peripheral blood vessel stored in said storage means.

7. A blood pressure monitoring apparatus according to claim 4, wherein said storage means stores a cardiovascular dynamic change threshold equivalent to a rate of change of a dc component of a pulse wave of a peripheral blood vessel; said cardiovascular dynamic change calculating means calculates said rate of change of said dc component of said pulse wave, which is a chronological rate of change of said dc component of said pulse wave based on said pulse wave at said peripheral blood vessel detected by said pulse wave detecting means; and said second judging means judges whether or not said rate of change of said dc component of said pulse wave calculated by said cardiovascular dynamic change calculating means exceeds said cardiovascular dynamic change threshold equivalent to said rate of change of said dc component of said pulse wave of said peripheral blood vessel stored in

said storage means.

8. A blood pressure monitoring apparatus according to claim 4, wherein said storage means stores cardiovascular dynamic change thresholds respectively equivalent to a heart rate change, a rate of change of an amplitude of a pulse wave of a peripheral blood vessel, and a rate of change of a dc component of a pulse wave of a peripheral blood vessel; said cardiovascular dynamic change calculating means calculates not only said heart rate change based on said time interval detection reference point detected by said time interval detection reference point detecting means, but also said rate of change of said amplitude of said pulse wave, which is a chronological rate of change of said amplitude of said pulse wave and said rate of change of said dc component of said pulse wave, which is a chronological rate of change of said dc component of said pulse wave, based on said pulse wave at said peripheral blood vessel detected by said pulse wave detecting means; said second judging means judges whether or not said heart rate change calculated by said cardiovascular dynamic change calculating means exceeds said cardiovascular dynamic change threshold equivalent to said heart rate change stored in said storage means, whether or not said rate of change of said amplitude of said pulse wave calculated by said cardiovascular dynamic change calculating means exceeds said cardiovascular dynamic change threshold equivalent to said rate of change of said amplitude of said pulse wave of said peripheral blood vessel stored in said storage means, and whether or not said rate of change of said dc component of said pulse wave calculated by said cardiovascular dynamic change calculating means exceeds said cardiovascular dynamic change threshold equivalent to said rate of change of said dc component of said peripheral blood vessel stored in said storage means; and said control means controls said blood pressure measuring means and measures blood pressure of a subject using said cuff if it is judged that said heart rate change exceeds said cardiovascular dynamic change threshold equivalent to said heart rate change, if it is judged that said rate of change of said amplitude of said pulse wave exceeds said cardiovascular dynamic change threshold equivalent to said rate of change of said amplitude of said pulse wave of said peripheral blood vessel, or if it is judged that said rate of change of said dc component of said pulse wave exceeds said cardiovascular dynamic change threshold equivalent to said rate of change of said dc component of said pulse wave of said peripheral blood vessel.

9. A blood pressure monitoring method comprising said steps of:

measuring blood pressure using cuff;
 storing a pulse wave propagation time change threshold and a cardiovascular dynamic change threshold, both thresholds being inputted from an external means;
 detecting a time interval detection reference point on a pulse wave at an aorta of a body;
 detecting a pulse wave at a peripheral blood vessel appearing with a time delay with respect to said pulse wave at said aorta;
 counting a pulse wave propagation time based on detected outputs from said time interval detection reference point and said pulse wave;
 calculating a pulse wave propagation time change from said two pulse wave propagation times counted;
 calculating a cardiovascular dynamic change from said time interval detection reference point or said pulse wave at said peripheral blood pressure;
 judging whether or not said pulse wave propagation time change calculated exceeds said pulse wave propagation time change threshold stored;
 judging whether or not said cardiovascular dynamic change exceeds said cardiovascular dynamic change threshold;
 and
 measuring blood pressure of a subject using said cuff if it is judged that said pulse wave propagation time change exceeds said pulse wave propagation time change threshold or if it is judged that said cardiovascular dynamic change exceeds said cardiovascular dynamic change threshold.

10. A blood pressure monitoring method comprising said steps of:

measuring blood pressure using a cuff;
 storing a blood pressure value;
 storing a pulse wave propagation time change threshold and a blood pressure change threshold that are inputted from external sources;
 detecting a time interval detection reference point on a pulse wave at an aorta of a body;
 detecting a pulse wave at a peripheral blood vessel appearing with a time delay with respect to the pulse wave at the aorta;

counting a pulse wave propagation time based on detected outputs of the time interval detection reference point and the pulse wave;

storing a pulse wave propagation time counted when the blood pressure has been measured;

calculating a pulse wave propagation time change from two pulse wave propagation times counted;

calculating coefficients specific to a subject from at least two blood pressure values stored and from the pulse wave propagation times stored corresponding to the each blood pressure values, the coefficients allowing equations expressing a relationship between blood pressure and pulse wave propagation time to be established;

updating a pulse wave propagation time change threshold stored by dividing a blood pressure change threshold read by a calculated coefficient specific to the subject;

judging whether or not the calculated pulse wave propagation time change exceeds the pulse wave propagation time change threshold read; and

measuring blood pressure of the subject using the cuff by controlling the blood pressure measuring means and controlling the pulse wave propagation time change threshold updating operation when it is judged that the pulse wave propagation time change exceeds the pulse wave propagation time change threshold.

FIG. 1

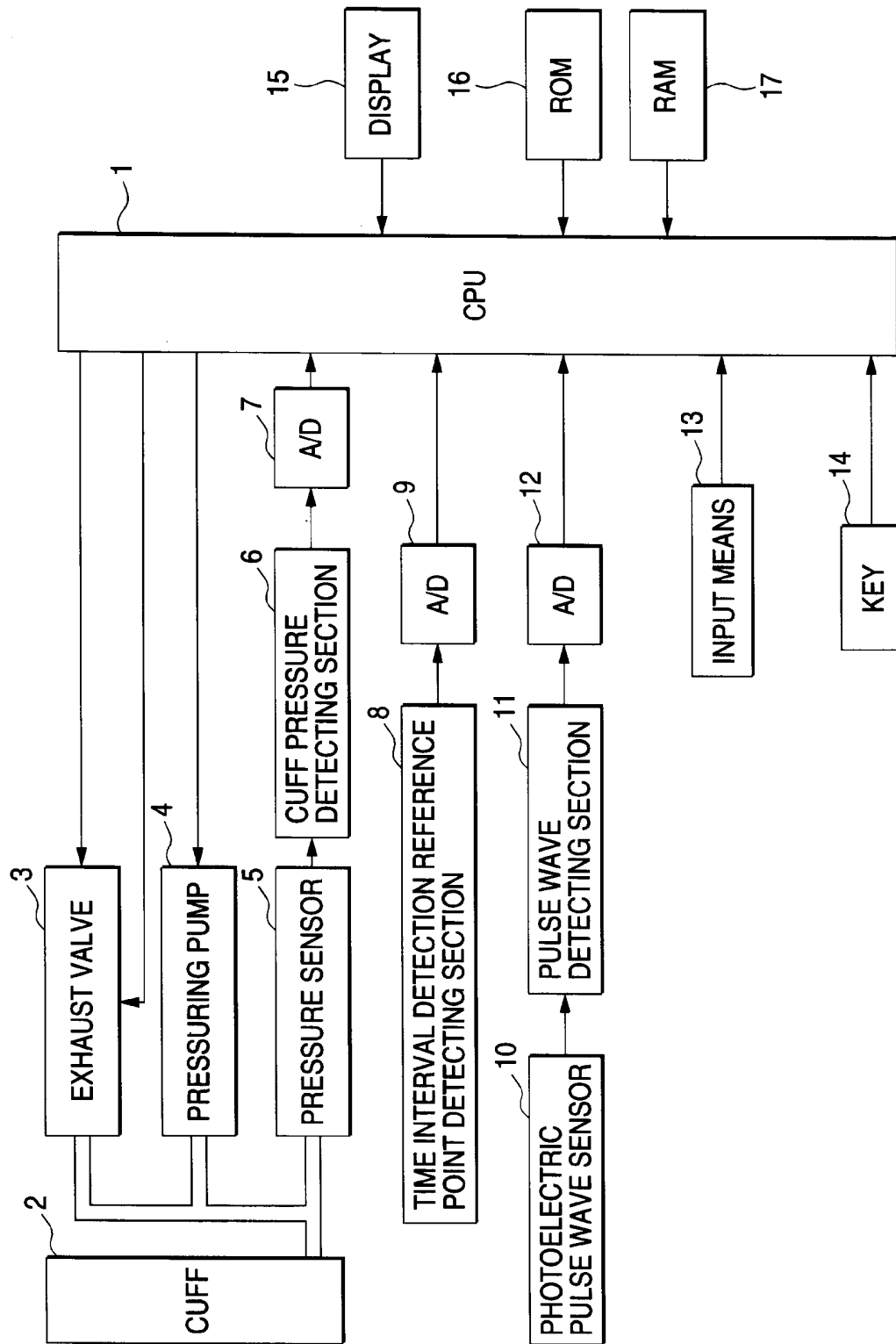


FIG. 2

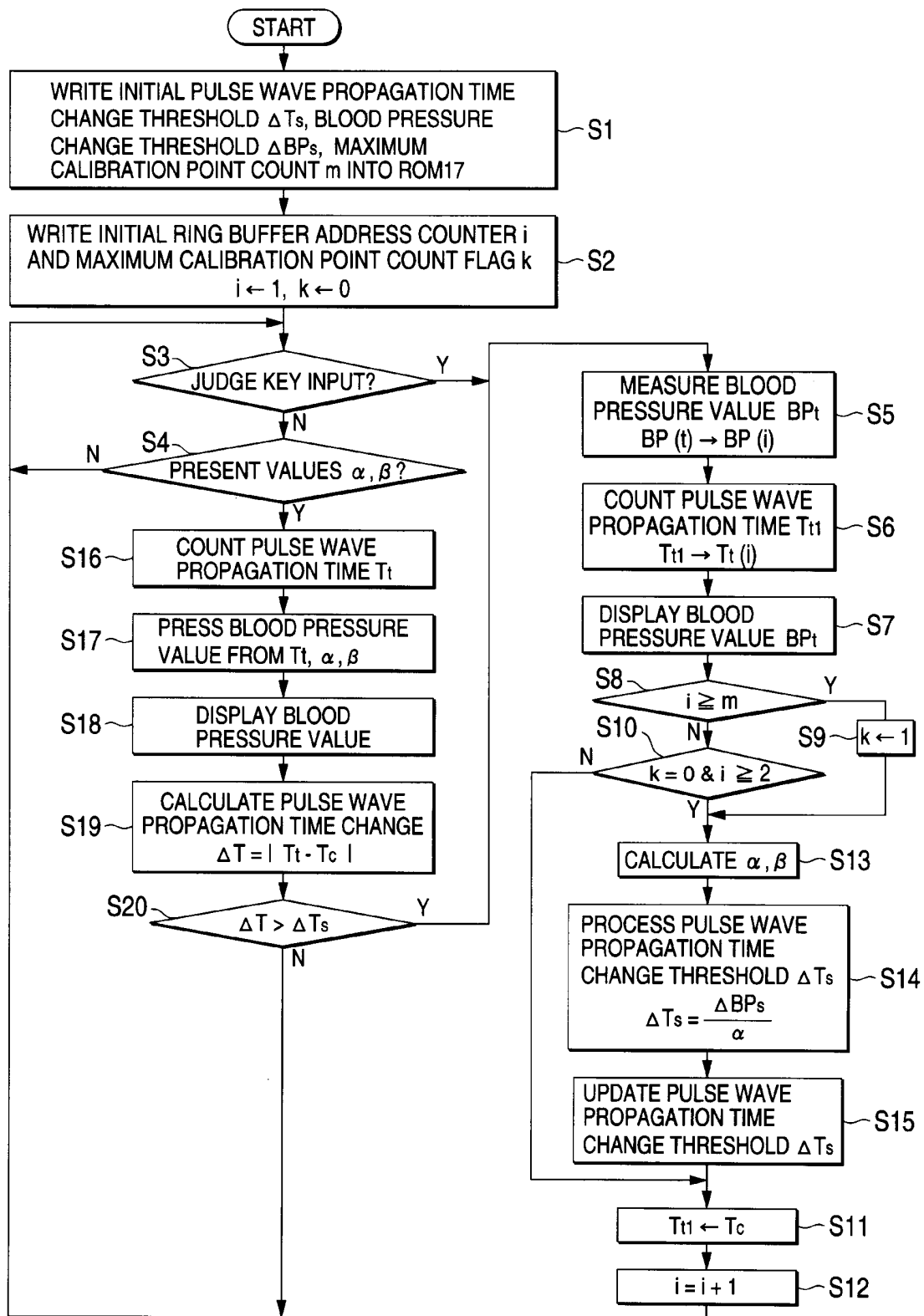


FIG. 3

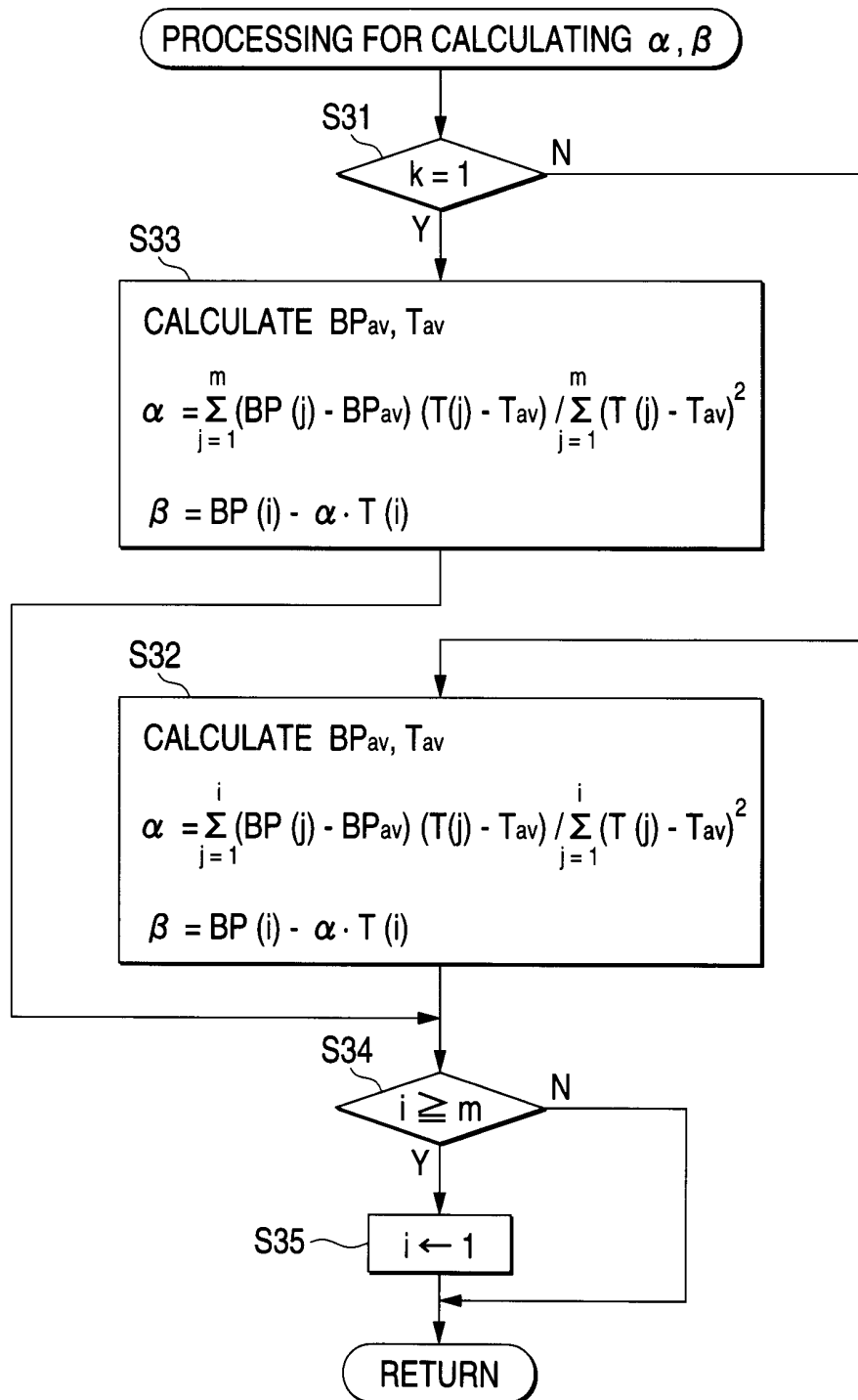


FIG. 4

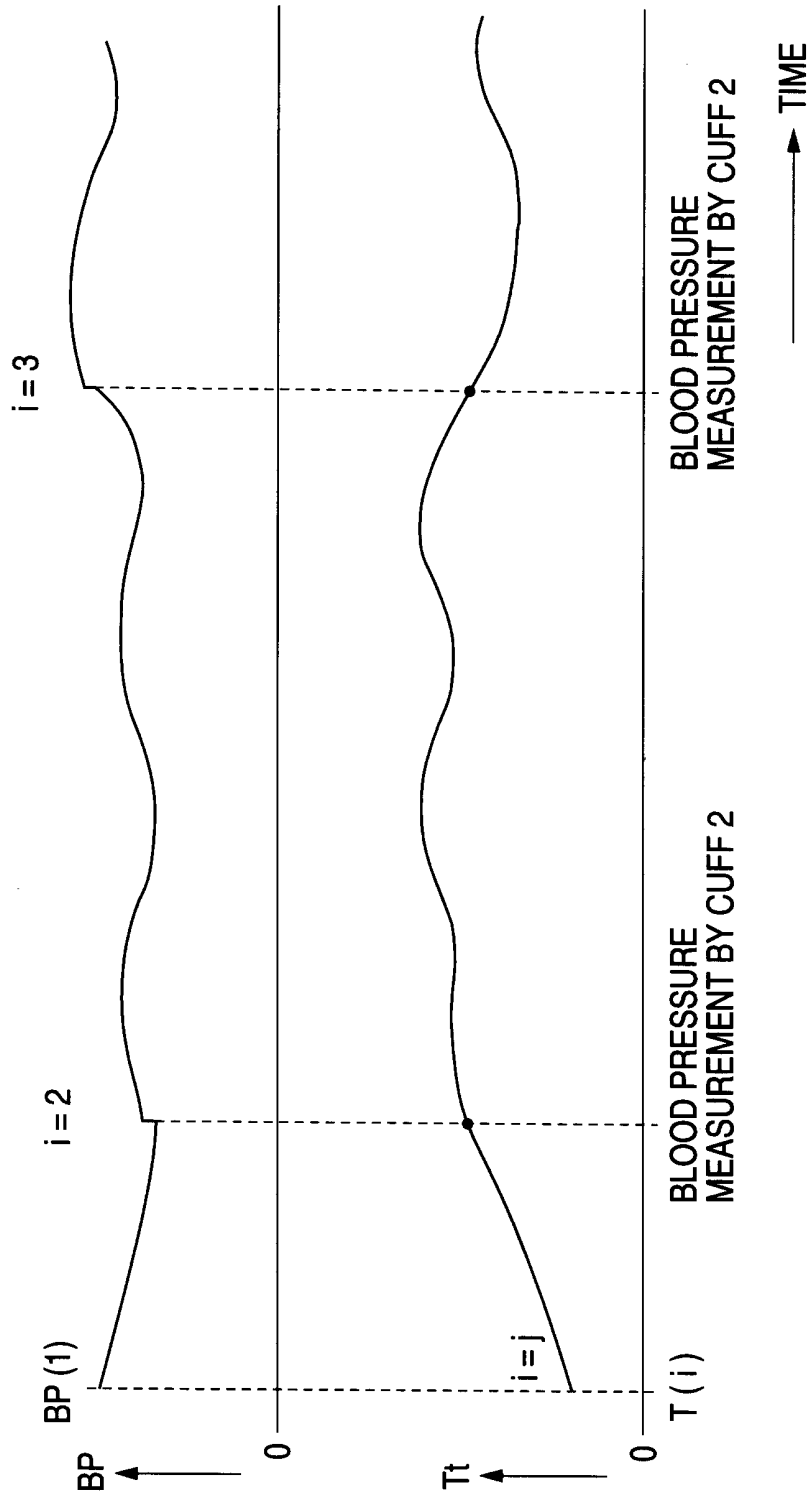


FIG. 5

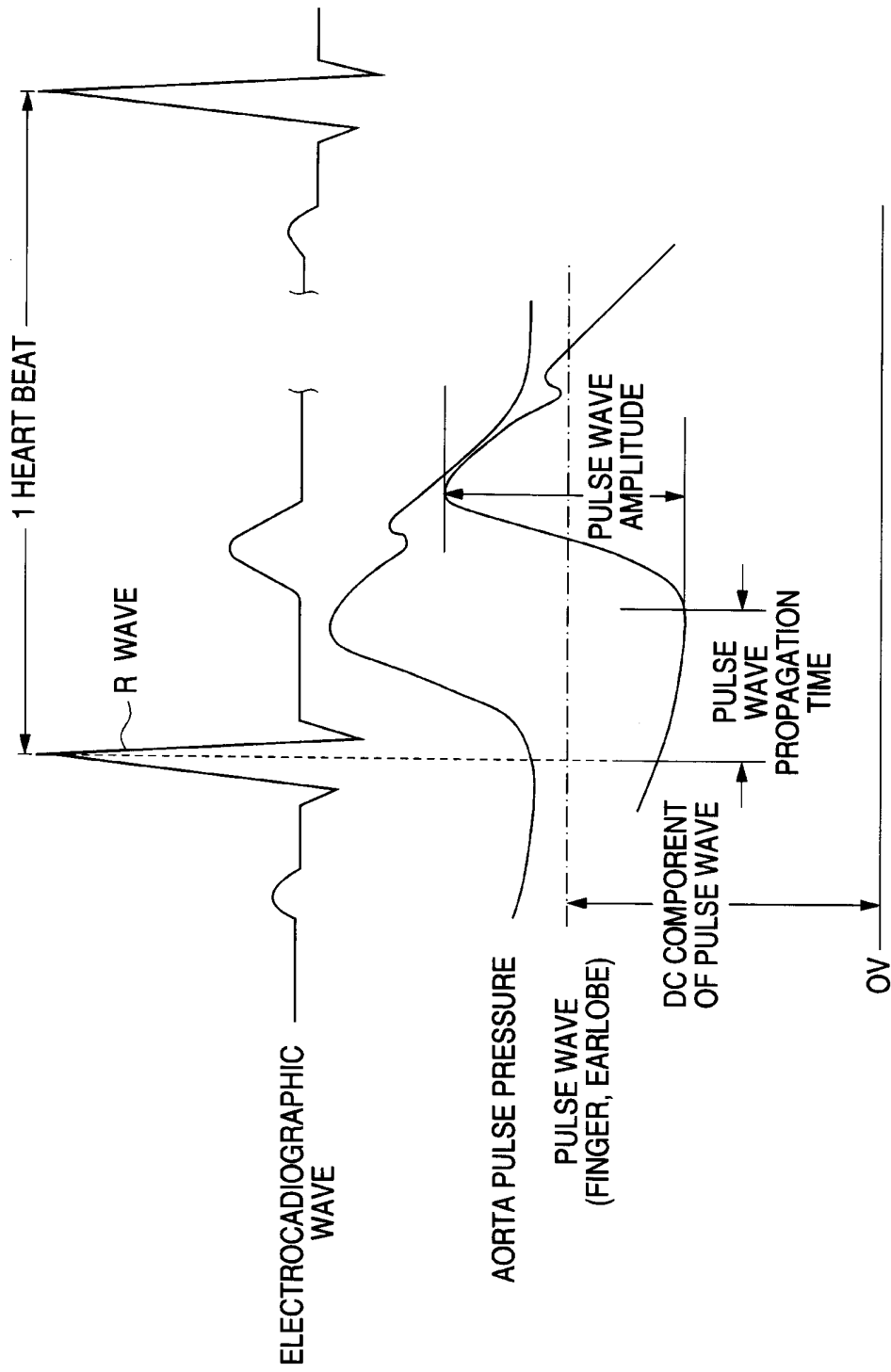


FIG. 6

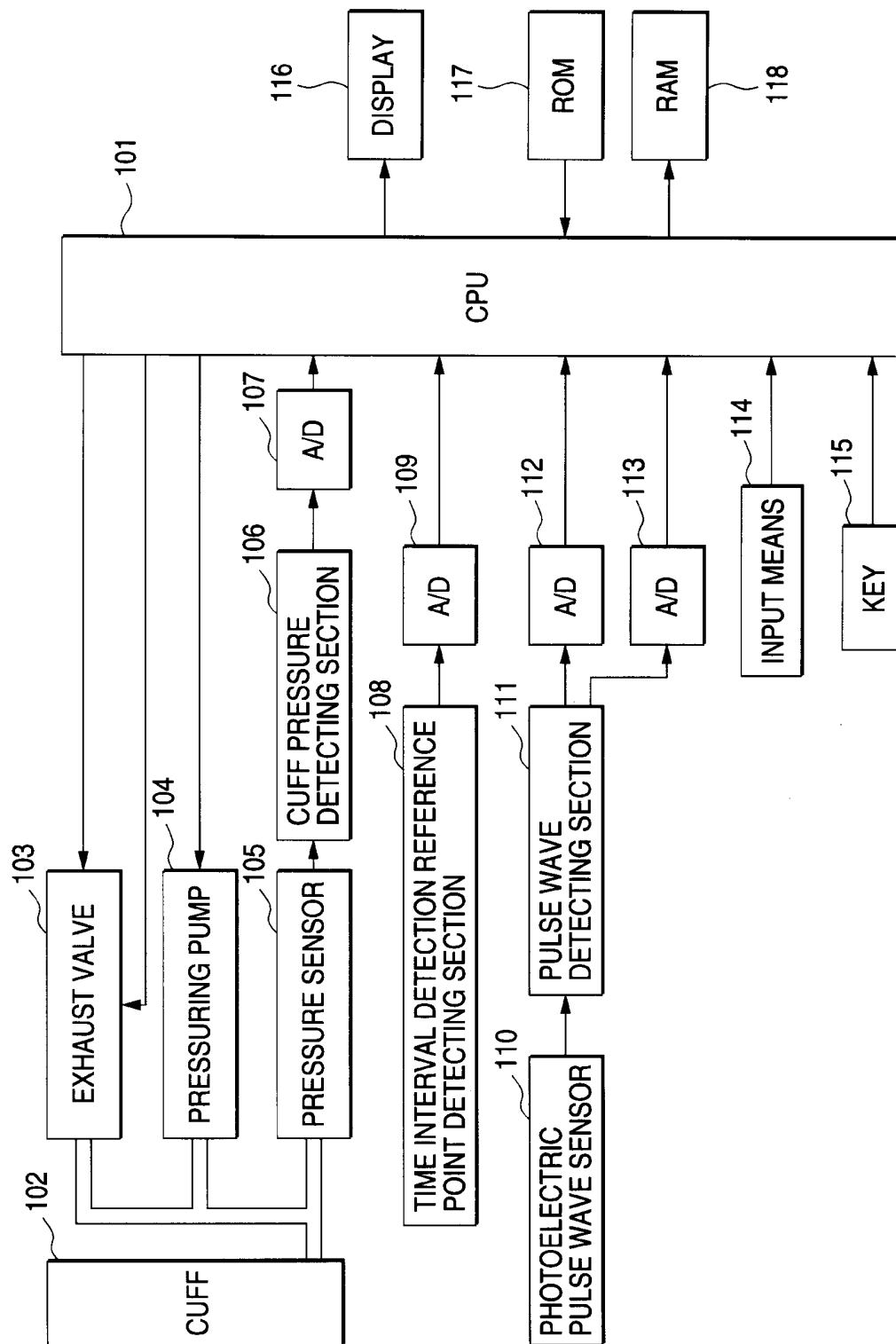
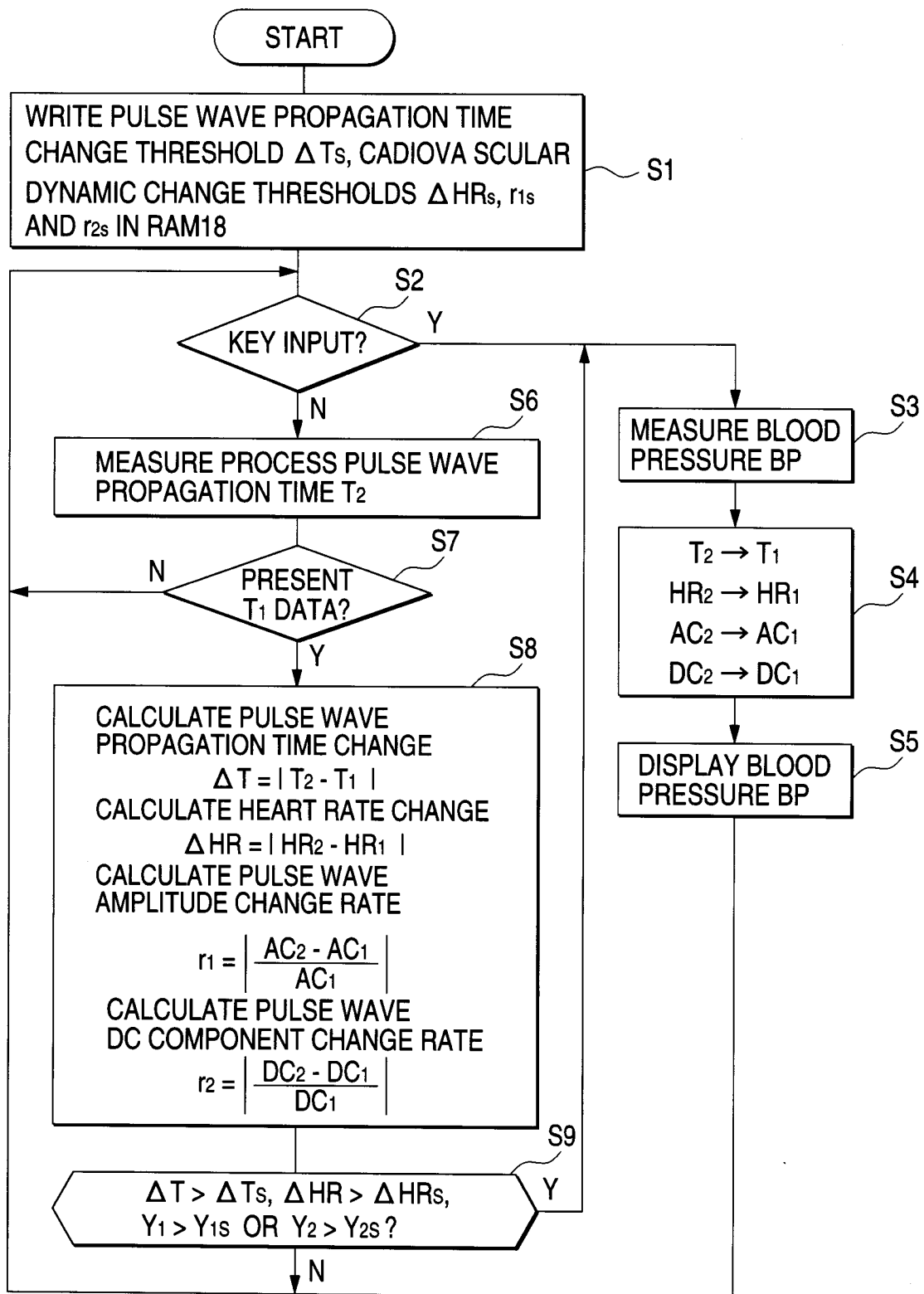


FIG. 7





European Patent
Office

EUROPEAN SEARCH REPORT

Application Number
EP 97 10 7225

DOCUMENTS CONSIDERED TO BE RELEVANT			
Category	Citation of document with indication, where appropriate, of relevant passages	Relevant to claim	CLASSIFICATION OF THE APPLICATION (Int.Cl.6)
X	US 5 564 427 A (S. ASO ET AL.)	1	A61B5/022
A	* the whole document *	2-10	A61B5/0225
	---		A61B5/0285
A	EP 0 498 281 A (SANKYO CO. LTD.)	1-3,9,10	
	* column 7, line 3 - column 9, line 27; figures 1-9 *		

A	US 5 033 472 A (T. SATO ET AL.)	1,9,10	
	* the whole document *		

A	US 5 339 822 A (L.A. TAYLOR ET AL.)	1,9,10	
	* the whole document *		

A	EP 0 698 370 A (COLIN CORP.)	1-10	
	* page 11, line 14 - page 12, line 3; figures 23-29 *		

A	US 5 199 438 A (A.L. PEARLMAN)	1-10	
	* column 6, line 8 - line 40 *		
	* column 7, line 9 - column 10, line 29; figures 1-13 *		

The present search report has been drawn up for all claims			TECHNICAL FIELDS SEARCHED (Int.Cl.6) A61B
Place of search		Date of completion of the search	Examiner
THE HAGUE		26 September 1997	Hunt, B
CATEGORY OF CITED DOCUMENTS X : particularly relevant if taken alone Y : particularly relevant if combined with another document of the same category A : technological background O : non-written disclosure P : intermediate document T : theory or principle underlying the invention E : earlier patent document, but published on, or after the filing date D : document cited in the application L : document cited for other reasons & : member of the same patent family, corresponding document			

EPO FORM 1503 03/82 (P04C01)